

UBD SUSTAINABILITY PLAYBOOK

*A Practical Guide to a Sustainable Future for Our University:
LEARN with purpose, LIVE responsibly and LEAD with impact*



INTRODUCTION

The UBD Sustainability Playbook serves as a practical guide to empower the university community in driving UBD's commitment towards a sustainable future.

It translates UBD's Sustainability Masterplan, guided by the LEARN.LIVE.LEAD model, into actionable strategies that can be implemented by all members of the UBD community at the Faculties, Institutes, Centres, Administrative & Support Offices and in collaboration with our External Partners. This ensures that sustainability is not only a policy framework but a lived practice embedded in teaching, research, infrastructure, operations and governance, and community engagement.

Who is this Playbook for?

- Staff and Students at Faculties, Institutes & Centres
- Staff at Administrative & Support Offices
- External Partners

Through this playbook, all members of the UBD community and its partners are encouraged to champion and support sustainability within their respective domains, align their actions with UBD's institutional goals and contribute meaningfully to national and global sustainability agendas.



Our Sustainability Policy Framework

VISION

To create a sustainable ecosystem that extends beyond our campus, driving positive change in our community and contributing to global sustainability efforts.

MISSION

To make positive impact on social, economic and environmental sustainability through our academic, research, infrastructure, operation and governance, and community engagement.



PILLAR I: Driving Innovation through Sustainability Research



PILLAR II: Cultivating Sustainability Champions through Transformative Education



PILLAR III: Futuring Sustainability through Green Campus



PILLAR IV: Sustainable Stewardship through Visionary Governance



PILLAR V: Empowering Sustainable & Resilient Communities through Engagement and Partnership

GOALS

GOAL 1 - RESEARCH

To catalyse innovative, interdisciplinary research that delivers tangible sustainability solutions.

GOAL 2 - EDUCATION

To cultivate a generation of sustainability-minded graduates equipped with the knowledge and skills to lead transformative change toward a greener, more just and resilient future.

GOAL 3 - INFRASTRUCTURE

To transform UBD into a sustainable and vibrant campus that supports green living, low-impact operations and the well-being of its community.

GOAL 4 - OPERATION AND GOVERNANCE

To embed sustainability into the DNA of university policies, systems and leadership.

GOAL 5 - COMMUNITY ENGAGEMENT

To empower communities within and beyond the university through inclusive engagement, partnerships and capacity-building initiatives that promote sustainable living and catalyse societal transformation.

DRIVING CHANGE TOGETHER: How UBD Drives Sustainability

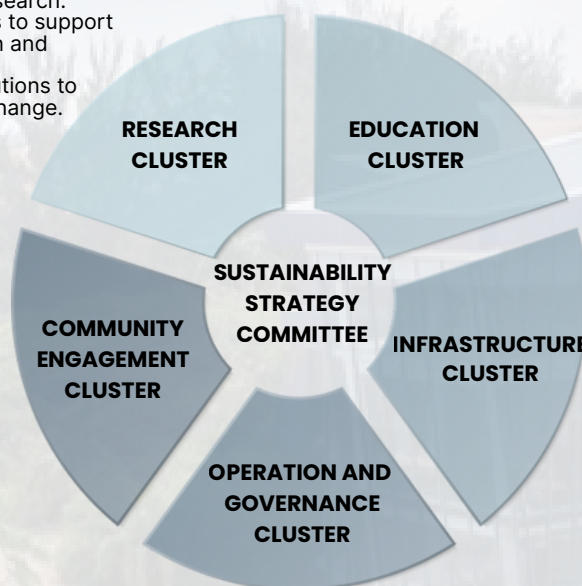
The UBD Sustainability Strategy Committee (SSC), chaired by the Assistant Vice-Chancellor (Research, Innovation and Sustainability), provides strategic oversight for the university's sustainability agenda. The SSC reports to UBD's top management team and ensures that all sustainability efforts are coordinated, evidence-based and aligned with national priorities and global sustainability goals.

To support effective implementation, UBD's framework is organised into five Sustainability Clusters, each aligned with the university's core sustainability pillars. Every cluster is led by a designated Cluster Champion responsible for coordinating, monitoring and advancing sustainability initiatives within their thematic area. Each cluster is guided by a set of strategic priorities that shape its actions, initiatives and contributions to UBD's overall sustainability goals.

OUR KEY STRATEGIES

- Build capacity to translate research into practical, high-impact solutions that can be patented and commercialised.
- Foster a collaborative research ecosystem to drive interdisciplinary sustainability research.
- Establish Sustainability Grant schemes to support interdisciplinary sustainability research and mobilise external partnerships.
- Translate research into actionable solutions to amplify impact and drive meaningful change.

- Strengthen workplace sustainability literacy among new and existing UBD staff.
- Expand sustainability knowledge and competencies across society through targeted outreach programmes.
- Deepen strategic partnerships to support impactful community-led sustainability projects.
- Foster active and collective engagement of the UBD community in advancing the university's sustainability agenda.
- Bridge research and academia with community needs to support evidence-based sustainability solutions.



- Enhance sustainability literacy and teaching effectiveness among academics by providing access to targeted resources and trainings.
- Embed sustainability across the curriculum and student experience through interdisciplinary learning and experiential opportunities.
- Promote inclusive access to quality education, with a focus on supporting underprivileged and underrepresented students (i.e. students with disability).

- Assess the scope and effectiveness of University energy management systems to reduce overall energy consumption.
- Ensure responsible management of water resources to reduce overall consumption.
- Assess the scope and effectiveness of University waste management system by means of responsible recycling and composting.
- Increase Green spaces and native conservation of trees.
- Evaluate the extent and effectiveness of disability accessibility measures implemented at University.
- Ensure accessible and supportive health services and facilities for the UBD community.
- Achieve Green Mark Certification buildings for new buildings.

- Strengthen a zero-tolerance culture by promoting ethical behaviour and safe practices across the university.
- Promote health literacy and encourage healthier lifestyle choices among the UBD community.
- Support better work-life balance to enhance the wellbeing of staff and students.
- Encourage sustainable procurement by integrating environmental and ethical considerations into purchasing.

THE LEARN.LIVE.LEAD MODEL: Guiding How We Think, Act & Inspire

To translate our sustainability goals and strategies into coordinated and impactful actions, UBD adopts the LEARN.LIVE.LEAD model. This model provides the UBD community and its partners with a clear and unifying approach to practicing sustainability, aligned with the University's Sustainability Framework and supporting the advancement of its vision, mission and goals.

LEARN:

Focuses on integrating sustainability into teaching, research and training, ensuring that the university community develops the knowledge, skills and mindset to apply sustainable thinking and make informed decisions in their future roles.

This directly supports the *Research and Education* pillars.

LIVE:

Emphasises applying sustainability principles within daily campus operations, enabling everyone to experience and practice sustainable living while fostering a deeper appreciation for the environment, social wellbeing and responsible resource use.

This advances the *Infrastructure and Operations & Governance* pillars.

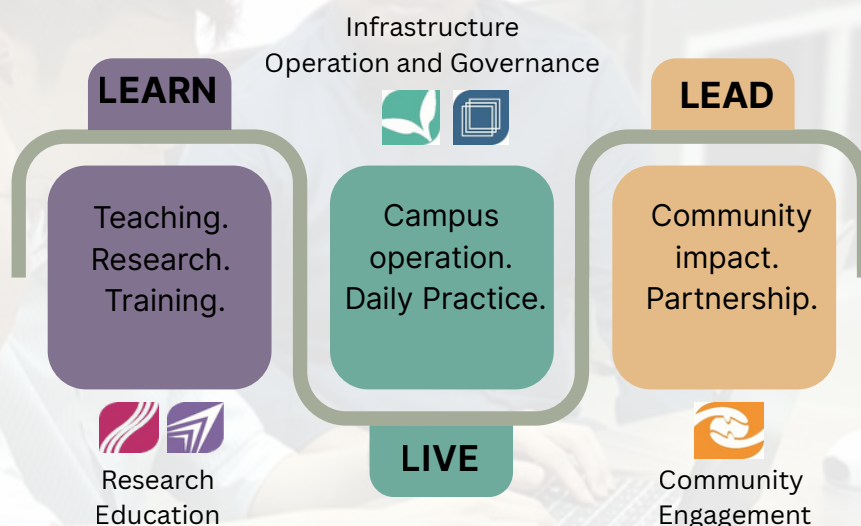
LEAD:

Highlights the university's role as a model for sustainability, strengthening collaborations between the university and the wider community to collectively address sustainability challenges.

This reflects the *Community Engagement* pillar.

UBD LEARN.LIVE.LEAD Sustainability Model

Strategically aligned with the 5 Sustainability Pillars in UBD



"By adopting the LEARN.LIVE.LEAD model, UBD makes sustainability easy to understand and act upon. It translates broad concepts into practical steps, showing how everyone can play a direct role in advancing UBD's sustainability journey".

THE HOW: From Strategy to Collective Action

IMPLEMENTING SUSTAINABILITY AT THE FACULTY, RESEARCH INSTITUTE AND CENTRE

This section outlines key governance mechanisms and recommended actions under Research & Education (LEARN), Infrastructure, Operations & Governance (LIVE) and Community Engagement (LEAD) — to guide staff at faculties, research institutes and centres in planning, executing and monitoring their sustainability initiatives effectively.

Governance and Coordination

- Appoint a Sustainability Focal Point or Committee.
- Develop a Sustainability Plan aligned with UBD's institutional targets.
- Report all sustainability-related data and evidence through the Sustainability Data Sharing Portal, UBD's central platform for sustainability reporting.
- Integrate sustainability discussions into meetings and planning sessions.

Recommended Actions Under Each Pillar

A. Research (LEARN):

- Encourage interdisciplinary sustainability research projects aligned with UBD's thematic areas and national priorities.
- Initiate UBD Sustainability Living Lab projects that integrate interdisciplinary innovation and practical solutions.
- Encourage interdisciplinary postgraduate research projects that address sustainability issues.
- Organise sustainability research seminars, workshops or conferences in collaboration with partner universities.
- Initiate collaborative sustainability research with partner universities to strengthen regional and global networks.
- Produce joint publications or conference presentations related to sustainability in collaboration with ASEAN or international institutions.

B. Education (LEARN):

- Embed sustainability concepts into curriculum, course outcomes and assessments (where applicable).
- Introduce new sustainability-focused modules and programmes at both undergraduate and postgraduate levels (where applicable).
- Design and develop interdisciplinary sustainability programme (where applicable).
- Encourage sustainability-themed capstone or final-year projects (where applicable).

C. Infrastructure, Operations & Governance (LIVE):

- Implement initiatives that reduce energy, water and waste and enhance green spaces in the workplace.
- Foster sustainable procurement, digitalisation and green office practices.
- Promote inclusivity, health and wellness in the workplace.
- Practise sustainability in meetings, workshops and events (e.g., no single-use items, digital materials).
- Introduce innovative pilots or solutions to address operational challenges such as waste, energy and water.
- Establish a sustainability committee with structured reporting mechanisms.

D. Community Engagement (LEAD):

- Promote sustainability awareness and practices among staff and students through campaigns, workshops and learning activities.
- Participate actively in sustainability outreach programmes led by the Community Engagement Cluster.
- Organise sustainability-focused events such as workshops, seminars, conferences or public talks that engage the wider community.
- Co-host sustainability-related events, campaigns or knowledge-sharing activities with local, regional or international partners.
- Co-develop community living lab projects in collaboration with NGOs, social enterprises or local businesses.
- Establish formal partnerships with external stakeholders to support sustainability initiatives and living lab collaborations.
- Encourage and facilitate student-led sustainability volunteer activities within and beyond the campus.
- Supervise community projects under the UBD DY COP initiative that contribute to economic, social and environmental wellbeing (where applicable)
- Share sustainability initiatives, outcomes and success stories through digital platforms such as websites, social media and outreach channels.

Sustainability Checklist

- ☐ Appoint sustainability focal point(s) or committee
- ☐ Develop an annual sustainability plan
- ☐ Map initiatives under LEARN.LIVE.LEAD
- ☐ Align all initiatives with institutional KPIs and Action Plan
- ☐ Implement and document initiatives (reports, photos, links)
- ☐ Upload data via Sustainability Data Sharing Portal
- ☐ Share success stories on digital platforms or other outreach platforms
- ☐ Review outcomes and plan improvements

Students as drivers of UBD's sustainability goals

Students are powerful catalysts of sustainability at UBD. As the next generation of thinkers and changemakers, their involvement fuels innovation, accelerates progress and drives meaningful transformation within and beyond the campus.

Recommended Actions Under Each Pillar

A. Research (LEARN):

- Undertake interdisciplinary postgraduate research projects that address sustainability issues.
- Apply for the UBD Sustainability Grant to design or participate in Living Lab projects as part of coursework or supervised research.
- Develop innovative solutions, prototypes or digital tools that address sustainability challenges within and beyond campus.
- Join sustainability workshops, conferences, seminars and training programmes to build knowledge and skills.
- Participate in sustainability-related competitions, hackathons, innovation challenges to further strengthen creativity and leadership.

B. Education (LEARN):

- Enrol in sustainability-focused modules, micro-credentials and training offered by the university.
- Undertake sustainability-themed Final Year Projects (FYP) or capstones that address real-world issues.
- Take up internships or placements with organisations, government agencies, NGOs or industry partners to gain hands-on experience in tackling sustainability issues.

C. Infrastructure, Operations & Governance (LIVE):

- Introduce innovative pilots or solutions to address operational challenges such as waste reduction, energy efficiency and water conservation.
- Practise everyday sustainable habits, including saving energy, reducing water use, sorting waste correctly and avoiding single-use items.
- Minimise environmental impact by using reusable bottles, bags and containers, and by supporting campus recycling initiatives.
- Report leaking taps, water issues or malfunctioning utilities to support proactive and efficient campus resource management.
- Uphold ethical and safe practices, respect diversity and inclusion, and prioritise health and wellbeing in your studies and campus life.
- Participate in campus audits, surveys, and data-collection activities related to energy, water, waste, mobility, health and inclusivity.

D. Community Engagement (LEAD):

- Serve as UBD Sustainability Youth Ambassadors or student volunteers supporting campus and community initiatives.
- Lead or co-organise sustainability campaigns, exhibitions, events or awareness programmes across the university.
- Represent UBD at national, ASEAN and international sustainability forums, youth networks, competitions, conferences or dialogues.
- Promote positive behavioural change among peers through leadership, advocacy and peer influence.
- Collaborate with NGOs, community groups, industries or government partners on sustainability projects and outreach initiatives.
- Champion student-led initiatives that strengthen UBD's visibility and impact in sustainability at the local, regional and global levels.

Interested in championing sustainability?

Join the Sustainability Youth Ambassador Programme — where passionate students come together to spark ideas, lead meaningful actions and inspire their peers.

With interactive training and hands-on experiences, ambassadors grow as leaders while making a real impact on campus and beyond. Be part of the movement!

Follow their Instagram account @syap.ubd.

IMPLEMENTING SUSTAINABILITY AT ADMINISTRATIVE AND SUPPORT OFFICES

This section outlines key governance mechanisms and recommended actions under Research & Education/Training (LEARN), Infrastructure, Operations & Governance (LIVE) and Community Engagement (LEAD) — to guide offices in planning, executing and monitoring their sustainability initiatives effectively.

Governance and Coordination

- Appoint a Sustainability Focal Point or Committee.
- Develop a Sustainability Plan aligned with UBD's institutional targets.
- Report all sustainability-related data and evidence through the Sustainability Data Sharing Portal, UBD's central platform for sustainability reporting.
- Integrate sustainability discussions into meetings and planning sessions.

Recommended Actions Under Each Pillar

A. Research (LEARN):

Support and initiate interdisciplinary Living Lab projects to address real campus operational challenges by:

- Identifying operational challenges (e.g., waste flow issues, workflow delays).
- Collaborating with academics and students to co-design Campus Living Lab projects addressing these challenges.
- Providing access to operational data, campus facilities or procedural insights needed for research.
- Supporting pilot testing, demonstration projects, prototypes or digital solutions developed under the Living Lab.

B. Education (LEARN):

- Encourage all office staff to enrol in sustainability-related training program organised by the university
- Integrate sustainability training as part of staff professional development plans.

C. Infrastructure, Operations & Governance (LIVE):

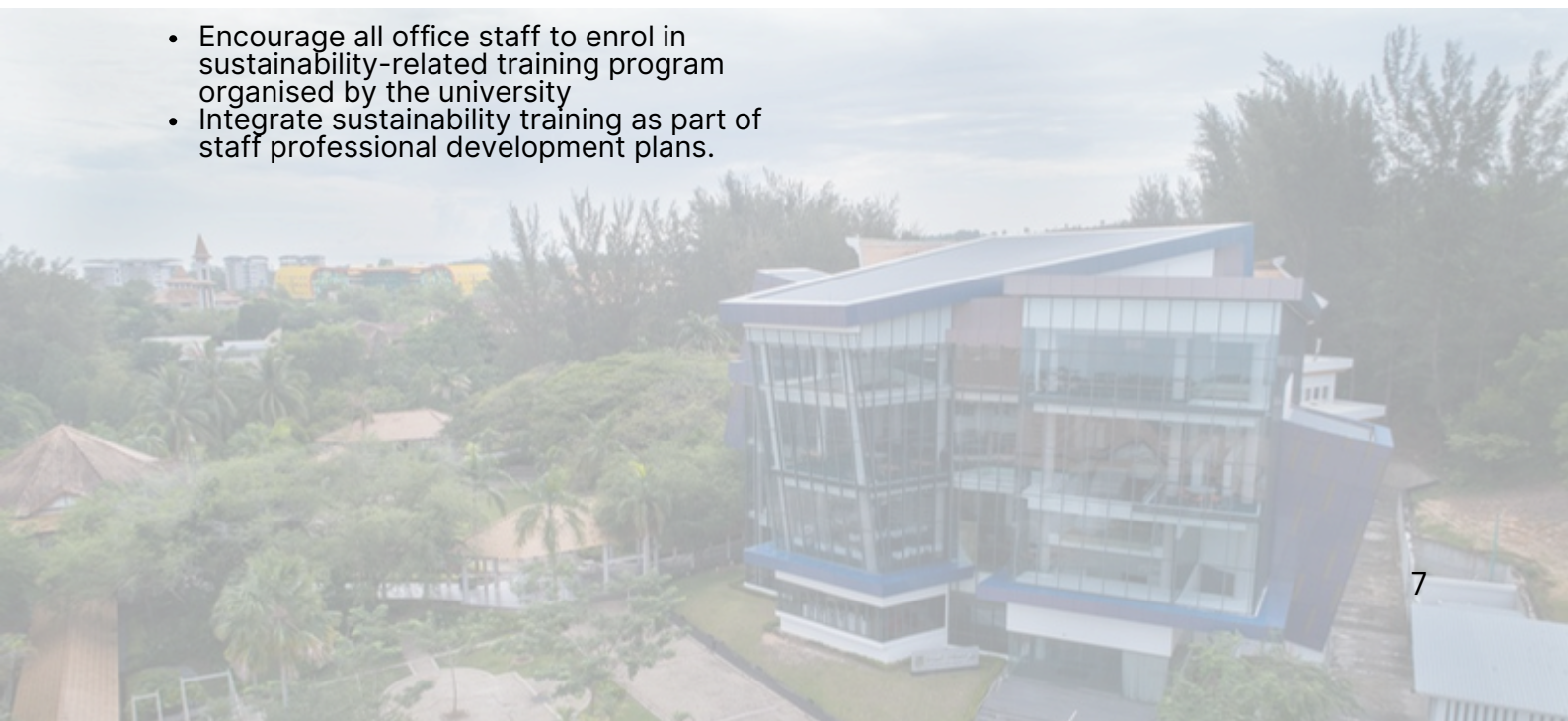
- Implement initiatives to reduce energy, water and waste within office spaces.
- Foster sustainable procurement, digitalisation and green office practices.
- Promote inclusivity, health and wellness across the workplace.
- Introduce innovative pilots or solutions to address operational challenges.
- Practise sustainability in meetings, workshops and office events (e.g., no single-use items, digital materials).
- Establish clear sustainability coordination and reporting mechanisms within the office.

D. Community Engagement (LEAD):

- Participate in UBD-wide sustainability campaigns.
- Support exhibitions, awareness booths and sustainability events.
- Organise workshop or outreach to promote sustainability.
- Share good practices and success stories within UBD digital platforms and other outreach channels.

Sustainability Checklist

- ☐ Appoint sustainability focal point(s) or committee
- ☐ Develop an annual sustainability plan
- ☐ Map initiatives under LEARN.LIVE.LEAD
- ☐ Align all initiatives with institutional KPIs and Action Plan
- ☐ Implement and document initiatives (reports, photos, links)
- ☐ Upload data via Sustainability Data Sharing Portal
- ☐ Share success stories on digital platforms or other outreach platforms
- ☐ Review outcomes and plan improvements



PARTNERING FOR SUSTAINABLE PROGRESS

We recognise that sustainability is a shared responsibility that cannot be achieved in isolation. External partners play a transformative role in advancing UBD's sustainability mission. Their specialised expertise, strategic influence and extensive networks accelerate research, drive operational innovation and expand UBD's impact at local, national and global levels.

This section outlines key opportunities for collaboration, enabling external partners to contribute to meaningful, collaborative and far-reaching sustainability outcomes together with UBD.

A. Research (LEARN):

External partners are essential contributors to UBD's research ecosystem, helping advance innovative ideas and translate them into real-world solutions.

Potential Areas of Collaboration:

- Collaborate on the Sustainability Living Lab projects addressing real sustainability challenges.
- Provide technical expertise, data, facilities or tools to support research and prototype development.
- Offer specialised workshops, training or expert advisory to strengthen UBD's research capacity.
- Engage in joint research supervision or advisory roles for postgraduate students working on sustainability themes.

B. Education (LEARN):

External partners can strengthen UBD's institutional capacity and enrich learning experiences across the university.

Potential Areas of Collaboration:

- Deliver training, workshops or professional courses on sustainability, climate action or industry best practices.
- Serve as expert speakers or mentors in sustainability modules, seminars, conferences or leadership programmes.
- Support staff and student skill development through internships, mentorships or applied learning opportunities.
- Contribute to joint curriculum development, micro-credentials or professional certification programmes.

C. Infrastructure, Operations & Governance (LIVE):

External partners can play a pivotal role in strengthening UBD's operational systems and accelerating the transition toward a more efficient, resilient and environmentally responsible campus.

Potential Areas of Collaboration:

- Share best practices, operational models and technical guidance on energy efficiency, water management, waste reduction and circular economy solutions.
- Collaborate with UBD on developing operational guidelines, standards or policy recommendations that enhance sustainability practices across campus.
- Support infrastructure-related improvements through technical assistance, engineering expertise, or advisory input.
- Co-design operational improvement pilots with UBD (e.g., smart energy monitoring, waste flow optimisation, green procurement systems).

D. Community Engagement (LEAD):

External partners can broaden UBD's reach by strengthening community-focused sustainability efforts.

Potential Areas of Collaboration:

- Co-organise outreach programmes, campaigns and public events that promote sustainability and strengthen community awareness.
- Co-develop and implement community Living Lab projects in collaboration with UBD researchers to address real-world sustainability challenges.
- Establish formal partnerships and collaborative agreements with UBD to support sustainability initiatives, Living Lab activities and long-term impact.
- Contribute to national, ASEAN, and global platforms that highlight UBD's sustainability work.
- Share sustainability initiatives co-organised with UBD, outcomes and success stories through digital platforms and outreach channels.

Interested in partnering with UBD to explore collaborative sustainability opportunities?

Please contact the UBD Sustainability Office, Office of Assistant Vice Chancellor Research, Innovation and Sustainability at sustainability.oavcris@ubd.edu.bn.

We welcome meaningful collaborations that create lasting impact for the university, the wider community and the region.

CALL TO ACTION

Every member of the UBD community — together with our valued external partners — plays a critical role in advancing the university's sustainability vision. By embedding sustainability across research, teaching, infrastructure, operations and governance, and community engagement, our shared actions not only strengthen UBD's institutional goals but also shape and inspire the next generation of sustainability leaders.

GET INVOLVED

Interested in joining us on our sustainability journey? We would love to hear from you.

Please contact the UBD Sustainability Office, Office of Assistant Vice Chancellor Research, Innovation and Sustainability at sustainability.oavcris@ubd.edu.bn.



**"Together, we
LEARN with purpose,
LIVE responsibly and
LEAD with impact -
towards a
sustainable future".**